

PUBLIC UTILITIES

The existing utilities listed below and shown on these plans represent the best information available as obtained on our surveys. This information does not relieve the contractor of the responsibility to be satisfied as to its accuracy and the location of existing utilities.

Name Of Owner	Type Of Utility
AT&T Attention: Rodney Cooper Phone: (313) 310-8678 Email: rc9827@att.com	Communications
DTE 37849 Interchange Dr. Farmington Hills, MI 48335 Attention: Saso Trpceski Phone: (313) 460-7038 Email: rc9827@att.com	Electric

NOTES APPLYING TO STANDARD PLANS

Where the following items are called for on plans, they are to be constructed according to the standard plan given below opposite each item unless otherwise indicated.

Title	Plan No.
ROAD	
SOIL EROSION & SEDIMENTATION CONTROL MEASURES	R-96-E
SEEDING AND TREE PLANTING	R-100-1*
PAVEMENT MARKINGS	
PAVEMENT ARROW AND MESSAGE DETAILS	PAVE-900-H
LONGITUDINAL LINE TYPES AND PLACEMENT	PAVE-905-F
INTERSECTION, STOP BAR, AND CROSSWALK MARKINGS	PAVE-945-E
PARKING AREA PAVEMENT MARKINGS	PAVE-956-D

* Denotes Special Detail

GENERAL NOTES

UTILITIES

MISS DIG/UNDERGORUND UTILITY INFORMATION

Contact MISS DIG System, Inc. for the protection of underground utilities and conformance with MCL 460.721 et seq, by phone at 811 or 800-482-7171 or via the web at either elocate.missdig.org for single address or rte.missdig.org, a minimum of 3 working days prior to the excavating, excluding weekends and holidays.

OLD PLANS

EXISTING PLANS

The following existing plans were referred to in the design of this project.
2005 Maybury State Park Entrance Road Improvements

In addition, other existing plans that predate this project may be available. These plans may be reviewed in the Maybury State Park Office during normal working hours.

EARTHWORK

EARTHWORK

Earthwork quantities are computed based upon limited survey information. These quantities are for bidding purposes only and will be adjusted by the engineer based upon actual field measurements

SLOPES

Construct Class A slopes on this project.

CLEARING LIMITS

The clearing limit for this project will be limited to 2' beyond the slope stake line except for wetland areas. For areas adjacent to wetlands, the clearing area will be limited to 2' beyond the edge of pavement or the bank stabilization limit. Restoration measures have been included in this set of plans for the approved areas of disturbance. The contractor shall submit an earth change plan for any work beyond the approved limits to the engineer to review for approval prior to the disturbance. All costs for obtaining and executing and executing an approved earth change plan, including restoration, shall be at the contractor's expense.

EARTH DISTURBANCE LIMITS

Limit earth disturbance to 2' beyond the slope stake line except areas adjacent to wetlands where the limits of earth disturbance are at the slope stake line. The plans include restoration measures for the approved areas of disturbance. Submit an earth change plan to the Engineer to review and approve for any work beyond the approved areas of disturbance. Costs for obtaining and executing an approved earth change plan, including restoration are the contractor's responsibility.

TURF ESTABLISHMENT / SLOPE RESTORATION

Use seed mixture THV for restoration of all disturbed areas outside limits of pavement and aggregate shoulders.

SOIL EROSION MEASURES

Appropriate soil erosion and sedimentation control measures prior to earth-disturbing activities. Place Turf Establishment items as soon as possible on potential erodible slopes as directed by the engineer. Protect critical ditch grades with either sod or seed/mulch or mulch blankets as directed by the engineer.

Silt fence to be placed beyond the earth disturbance limits as described above.

BASES

AGGREGATE BASE

Use aggregate 21AA, for aggregate bases unless otherwise specified.

HMA BASE CRUSHING AND SHAPING

The contractor shall trench 6 inches on each side of the existing driveway. The contractor shall perform HMA base crushing and shaping as shown on the plans. HMA base crushing and shaping material shall be spread into trench on each side of the driveway. The contractor will measure base thickness and add aggregate base, special to achieve a minimum of 9 inches of base material.

PAVEMENT

PAVEMENT AND HMA SURFACE REMOVAL QUANTITIES

Pavement and HMA surface removal as shown on the plans will be at the discretion of the engineer. If in his/her judgment, areas of pavement may be left in place, or additional areas added to provide the proper cross-section and base, changes will be made in the quantities.

SIGNS

GENERAL

All signs on the plans or in the log that do not have a recommendation are to be retained.

EXISTING SIGN RELOCATION

Salvage and reset any permanent signs that are to remain but require relocation due to Contractor operations at locations designated by the Engineer. Replace signs and posts damaged during the removal and storage operations with new signs and posts. The cost of this work is the Contractor's responsibility.

All signs shall be installed, removed and/or salvaged according to the Michigan Manual on Uniform Traffic Control Devices and the Michigan Department of Transportation 2020 edition Standard Specifications for Construction.

EXISTING FEATURES

Benches, tables, signs, etc. contractor shall avoid any existing features not shown on these plans. Protect from damaging.

EXISTING FEATURES

Quantities and locations of pathway construction are estimated from current existing data. The contractor shall review the entire length of pathway and quantities adjusted prior to beginning work. Contractor to coordinate with the engineer. Contingency quantities provided.

PROJECT SPECIFIC NOTES

HORIZONTAL ALIGNMENT

Match existing Driveway horizontal alignment along the length of the entire project.

VERTICAL ALIGNMENT

Final plan grade will match existing HMA centerline elevations along the entire length of the project.

HMA BASE CRUSHING AND SHAPING

Perform HMA base crushing and shaping in accordance with section 305 of the MDOT standard specifications for construction. Place suitable surplus material in trenched shoulder areas, as needed, and as directed by the Engineer. Loading, hauling, and placing acceptable surplus materials will be paid as "SALV CRUSHED MATERIAL, LM" in accordance with the 2020 MDOT standard specifications.

Remove unsuitable material after crushing and shaping in accordance with section 305 of the MDOT standard specifications and as directed by the Engineer.

Unsuitable material include peat soils, crushed base with excessive root material or other unsuitable materials as determined by the engineer.

EXISTING ELECTRICAL FACILITIES

Electrical facilities are present throughout the project limits and shall be protected. All work shall be completed in a manner that does not impact or damage the facilities in any way. Coordinate with MDNR and DTE when working near the facilities.

MISCELLANEOUS QUANTITIES – FOR INFORMATION ONLY

The following items of work shall be done as they apply throughout the project. These items are not detailed or included on the plan sheets, Quantities are estimated for contractor planning.

1	LSUM	Mobilization, Max
20	Ea	Misc Site Items, Rem, Salv, & Reinstall
330	Cyd	Embankment, CIP
142	Cyd	Excavation, Earth
16	Sta	Machine Grading
15	Cyd	Subgrade Undercutting, Type II
3176	Ft	Erosion Control, Silt Fence
1	LSUM	Project Cleanup
425	Syd	Aggregate Base, Conditioning
4856	Syd	HMA Base Crushing and Shaping
110	Cyd	Material, Surplus and Unsuitable, Rem, LM
112	Cyd	Salv Crushed Material, LM
50	Syd	Shld, CI II, 6 inch
33	Sta	Trenching
871	Ton	HMA, 5EML
1	Ea	Post, Mailbox
13	Ft	Post, Steel, 3 pound
2	Sft	Sign, Type IIIA
2368	Ft	Pavt Mrkg, Polyurea, 4 inch, White
29	Ft	Pavt Mrkg, Polyurea, 6 inch, Crosswalk
36	Ft	Pavt Mrkg, Polyurea, 12 inch, Crosswalk
23	Ft	Pavt Mrkg, Polyurea, 18 inch, Stop Bar
1	Ea	Pavt Mrkg, Preformed Thermopl, Accessible Sym
52	Ft	Pavt Mrkg, Waterborne, for Rest Areas, Parks, and Lots, 4 inch, Blue
1250	Dir	Witness, Log, \$1,250.00
10	Ea	Pavt Mrkg, Polyurea, Thru Arrow Sym
7	Ea	Barricade, Type III, High Intensity, Double Sided, Lighted, Furn
7	Ea	Barricade, Type III, High Intensity, Double Sided, Lighted, Oper
1	LSUM	Minor Traf Devices
15	Ea	Plastic Drum, Fluorescent, Furn
15	Ea	Plastic Drum, Fluorescent, Oper
135	Sft	Sign, Type B, Temp, Prismatic, Furn
135	Sft	Sign, Type B, Temp, Prismatic, Oper
1	LSUM	Traf Regulator Control
15	Syd	Mulch
1892	Syd	Slope Restoration, Non-Freeway, Type A

SHEET INDEX

Section 1 - Road Plans	
Title	1
Project Information	2
Legend	3-5
Typical Cross Sections	6-8
Removal	9
Construction	10
Maintenance of Traffic	11
Detail Grades	12-13
Pavement Markings	14

LABELING

GENERAL

- LEFT TURN ARROW
- RIGHT TURN ARROW
- TRAFFIC FLOW ARROW

REMOVAL

- ABANDON
- BULKHEAD
- CLEARING
- REMOVE
- SALVAGE
- SAVE

CONSTRUCTION

- ADJUST
- ADJUST - STRUC COVER WITH TYPE
- ADJUST - BY OTHERS

REMOVAL AND CONSTRUCTION

- RELOCATE - WITH CASE NUMBER
- RELOCATE - BY OTHERS

BOUNDARY

- CONTIGUOUS PROPERTY SYMBOL
- MDOT PARCEL NUMBER BOX
- PROPERTY OWNERSHIP ARROW
- PROPERTY OWNERSHIP ARROW - DOUBLE

MONUMENT PRESERVATION

- PRESERVE MONUMENT
- PROTECT MONUMENT

STRUCTURES

- REFERENCE POINT
- STRUCTURE NO. + CONTROL SECTION

BARRIERS

- CABLE BARRIER - NOT TO SCALE
- CABLE BARRIER - TRUE SCALE
- CONCRETE BARRIER - DOUBLE FACE
- CONCRETE BARRIER - SINGLE FACE
- FENCE
- GUARDRAIL - NOT TO SCALE
- GUARDRAIL - TRUE SCALE
- NOISE BARRIER
- GUARDRAIL RUN NUMBER
- IMPACT ATTENUATOR

BORINGS

BH# BORING

BOUNDARIES

- CITY LIMIT
- CONDO - LIMIT - LEGAL
- CONDO - LIMIT - NON-LEGAL
- CONDO - UNIT LINE - LEGAL
- CONDO - UNIT LINE - NON-LEGAL
- EASEMENT - LEGAL
- EASEMENT - NON-LEGAL
- MEANDER - LEGAL
- MEANDER - NON-LEGAL
- PARCEL - LEGAL
- PARCEL - NON-LEGAL
- PLAT - BLOCK LINE - LEGAL
- PLAT - BLOCK LINE - NON-LEGAL
- PLAT - LOT LINE - LEGAL
- PLAT - LOT LINE - NON-LEGAL
- PLAT - LIMIT - LEGAL
- PLAT - LIMIT - NON-LEGAL
- ROW - FREE ACCESS
- ROW - LIMITED ACCESS
- SECTION LINE - GOVERNMENT LOT - LEGAL
- SECTION LINE - GOVERNMENT LOT - NON-LEGAL
- SECTION LINE - MEANDER - LEGAL
- SECTION LINE - MEANDER - NON-LEGAL
- SECTION LINE - PRIVATE CLAIM - LEGAL
- SECTION LINE - PRIVATE CLAIM - NON-LEGAL
- SECTION LINE - LEGAL
- SECTION LINE - NON-LEGAL
- SECTION LINE - QUARTER - LEGAL
- SECTION LINE - QUARTER - NON-LEGAL
- SECTION LINE - EIGHTH - LEGAL
- SECTION LINE - EIGHTH - NON-LEGAL
- SECTION LINE - SIXTEENTH - LEGAL
- SECTION LINE - SIXTEENTH - NON-LEGAL
- TOWNSHIP LINE

CONSTRUCTION LIMITS

- SSL SLOPE STAKE LINE

CONTROL, CORNERS & MONUMENTS

- ALIGNMENT POINT MONUMENT
- BENCHMARK
- CONCRETE MONUMENT
- CONTROL POINT
- PARCEL CORNER - CAPPED IRON
- PARCEL CORNER - IRON PIN
- PARCEL CORNER - IRON PIPE
- PARCEL CORNER - NO ID
- PLAT CORNER
- MONUMENT BOX
- ROW MONUMENT
- SECTION CORNER - CENTER
- SECTION CORNER - GOVERNMENT LOT
- SECTION CORNER - MEANDER
- SECTION CORNER - PRIVATE CLAIM
- SECTION CORNER - QUARTER
- SECTION CORNER - QUARTER - HALF
- SECTION CORNER - SECTION
- SECTION CORNER - SECTION - HALF
- SECTION CORNER - SIXTEENTH
- SECTION CORNER - WITNESS

CURB & GUTTER

- CURB & GUTTER REMOVAL
- CURB RAMP OPENING

ENVIRONMENTAL

- EROSION CONTROL - SILT FENCE
- WETLAND - LEGAL
- WETLAND - NON-LEGAL
- CONTAMINATION - MONITORING WELL
- EROSION CONTROL NUMBER
- EROSION CONTROL - RIPRAP
- WATER SURFACE - ELEV
- WATER TABLE - ELEV
- WETLAND SPOT
- POTENTIALLY CONTAMINATED SITE

POSTS

- POST - FENCE
- POST - MAILBOX
- POST - NO ID

RAILROAD

- TRACK
- CROSSING - GATE
- CROSSING - SIGNAL BOX
- CROSSING - SIGNAL FLASHING
- CROSSING - SYMBOL

ROADSIDE / SITE

- ANTENNA
- BIG ROCK
- FLAG POLE
- PICNIC STOVE
- PICNIC TABLE
- SATELLITE DISH

SIGNS

- BAND - DOUBLE
- BAND - SINGLE
- POST - CROSS STREET
- POST - DOUBLE
- POST - DOUBLE - WITH BACK PANEL
- POST - SINGLE
- POST - SINGLE - WITH BACK PANEL
- STRUCTURE - CANTILEVER - EXISTING
- STRUCTURE - CANTILEVER
- STRUCTURE - TRUSS - EXISTING
- STRUCTURE - TRUSS
- SUSPENDED

VEGETATION

- BRUSH LINE
- HEDGE LINE
- TREE LINE - CANOPY OR TRUNK
- TREE LINE - TRUNK
- TRUNK LINE
- SHRUB
- TREE - CONIFER
- TREE - DECIDUOUS
- TREE - STUMP

TYPICAL SECTION

- CONCRETE - PROPOSED
- HMA - PROPOSED

SURFACING

REMOVAL

- CONCRETE RUBBLIZING OR HMA CRUSH & SHAPE
- HMA COLDMILLING
- HMA SURFACE REMOVAL AND / OR PAVEMENT REMOVAL
- AGGREGATE BASE CONDITIONING

PROPOSED

- AGGREGATE APPROACH
- BRIDGE APPROACH
- HMA SURFACE
- MISCELLANEOUS CONCRETE

SIDEWALK & CURB RAMPS

- SIDEWALK REMOVAL
- CURB RAMP
- LANDING
- CURB RAMP TYPE
- DETECTABLE WARNING SURFACE

NOTE:

EXISTING ITEMS ARE REPRESENTED BY THIN LINE WEIGHTS.
PROPOSED ITEMS ARE REPRESENTED BY HEAVIER LINE WEIGHTS.

FINAL ROW PLAN REVISIONS				SUBMITTAL DATE:			
NO.	DATE	AUTH	DESCRIPTION	NO.	DATE	AUTH	DESCRIPTION



NO SCALE

DRAWN BY: JWI	DATE: 06/12/26
CHECKED BY: SRT	DESIGN UNIT: MSG
FILE: 2600376_Maybury_Legend.dgn	TSC:

CS:	JN: 2600376
751/26110.KMM	

LEGEND	
MAYBURY STATE PARK DRIVE IMPROVEMENTS	

DRAWING	SHEET
MAYBURY LEGEND	SECT 1
1	3

ELECTRICAL

- HANDHOLE - EXISTING
- HANDHOLE, ROUND
- HANDHOLE, ROUND, 3 FOOT DIAMETER
- HANDHOLE, TYPE D
- MANHOLE - EXISTING
- SERVICE METER - EXISTING
- TRANSFORMER - PAD MOUNTED - EXISTING
- TRANSFORMER - POLE MOUNTED - EXISTING
- CABLE
- CABLE - TO BE REMOVED
- CABLE OVERHEAD
- CABLE OVERHEAD - TO BE REMOVED
- CABLE IN CONDUIT
- CABLE IN CONDUIT - TO BE REMOVED
- CABLE IN CONDUIT - DIRECTIONAL BORE

LIGHTING

- CONTROL PANEL - EXISTING
- CONTROL PANEL
- FLOOD LIGHT
- HANDHOLE, ROUND
- LIGHT STANDARD - EXISTING TO BE REMOVED & SALVAGED
- LIGHT STANDARD DOUBLE ARM - EXISTING
- LIGHT STANDARD DOUBLE ARM
- LIGHT STANDARD POST TOP - EXISTING
- LIGHT STANDARD POST TOP
- LIGHT STANDARD SINGLE ARM - EXISTING
- LIGHT STANDARD SINGLE ARM
- LUMINAIRE WALL MOUNTED UNDER BRIDGE - EXISTING
- LUMINAIRE WALL MOUNTED UNDER BRIDGE
- SUSPENDED LIGHT - EXISTING
- TOWER LIGHTING UNIT - EXISTING
- TOWER LIGHTING UNIT

ITS / SIGNALS

- DYNAMIC MESSAGE SIGN - EXISTING
- DYNAMIC MESSAGE SIGN
- ENVIRONMENTAL SENSOR STATION SITE
- FIBER OPTIC SPLICE CABINET
- HANDHOLE, ROUND, 3 FOOT DIAMETER
- HANDHOLE, ROUND, COMMUNICATIONS
- HANDHOLE, ROUND, ELECTRIC
- HANDHOLE, TYPE D
- ITS CABINET - PAD MOUNTED - EXISTING
- ITS CABINET - PAD MOUNTED
- ITS CABINET - POLE MOUNTED - EXISTING
- ITS CABINET - POLE MOUNTED
- MICROWAVE VEHICLE DETECTION SYSTEM - EXISTING
- MICROWAVE VEHICLE DETECTION SYSTEM
- MICROWAVE VEHICLE DETECTION SYSTEM ZONE COVERAGE - EXISTING
- MICROWAVE VEHICLE DETECTION SYSTEM ZONE COVERAGE
- SPUN CONCRETE POLE - EXISTING
- SPUN CONCRETE POLE
- SURVEILLANCE SYSTEM - EXISTING
- SURVEILLANCE SYSTEM
- WIRELESS LINK - EXISTING
- WIRELESS LINK
- COMMUNICATIONS CABLE IN CONDUIT
- COMMUNICATIONS CABLE IN CONDUIT - TO BE REMOVED

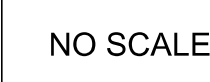
- ANTENNA
- CASE SIGN, 1-WAY - EXISTING
- CASE SIGN, 1-WAY
- CASE SIGN, 2-WAY - EXISTING
- CASE SIGN, 2-WAY
- CASE SIGN, 3-WAY - EXISTING
- CASE SIGN, 3-WAY
- CASE SIGN, 4-WAY - EXISTING
- CASE SIGN, 4-WAY
- DEDICATED SHORT RANGE COMMUNICATIONS
- CONTROLLER CABINET - PAD MOUNTED
- CONTROLLER CABINET - POLE MOUNTED
- CONTROL EMERGENCY PREEMPTION OPTICOM
- DILEMMA ZONE DETECTION
- GLOBAL POSITIONING SYSTEM MODULE
- HANDHOLE - 2 FOOT ROUND
- HANDHOLE - 2 FOOT SQUARE
- HANDHOLE - 3 FOOT ROUND
- HANDHOLE - 4 FOOT SQUARE
- HANDHOLE - POLYMER CONCRETE
- PEDESTAL
- PEDESTRIAN PUSHBUTTON
- POLE MAST ARM (LENGTH VARIES) - EXISTING
- POLE MAST ARM (LENGTH VARIES)
- POLE STRAIN
- POLE WOOD
- ROAD SIGN W/ FLASHING SIGN OPTICAL (1-WAY)
- SIGNAL HEAD PEDESTRIAN - EXISTING
- SIGNAL HEAD PEDESTRIAN 1-WAY
- SIGNAL HEAD PEDESTRIAN 2-WAY
- SIGNAL HEAD VEHICLE 1-WAY - EXISTING
- SIGNAL HEAD VEHICLE 1-WAY
- SIGNAL HEAD VEHICLE 2-WAY - EXISTING
- SIGNAL HEAD VEHICLE 2-WAY
- SIGNAL HEAD VEHICLE 3-WAY - EXISTING
- SIGNAL HEAD VEHICLE 3-WAY
- SIGNAL HEAD VEHICLE 4-WAY - EXISTING
- SIGNAL HEAD VEHICLE 4-WAY
- SIGNAL HEAD VEHICLE BAGGED
- SIGNAL HEAD VEHICLE PROGRAMMABLE
- VEHICLE DETECTION CAMERA
- VEHICLE DETECTION CAMERA - HEMISPHERICAL
- VEHICLE DETECTION LOOP
- VEHICLE DETECTION - RADAR
- WIRELESS VEHICLE DETECTION RADIO RECEIVER
- WIRELESS VEHICLE DETECTION RADIO REPEATER
- WIRELESS VEHICLE DETECTION SENSOR - EXISTING
- WIRELESS VEHICLE DETECTION SENSOR

CABLING / WIRING DIAGRAM

- CIRCUIT BREAKER
- COILED WIRE
- FUSE
- FUSE SWITCH
- GROUND
- ILLUMINATED CASE SIGN
- METER
- SERVICE DISCONNECT
- SIGNAL HEAD

NOTE:
EXISTING ITEMS ARE REPRESENTED BY THIN LINE WEIGHTS.
PROPOSED ITEMS ARE REPRESENTED BY HEAVIER LINE WEIGHTS.

FINAL ROW PLAN REVISIONS				SUBMITTAL DATE:			
NO.	DATE	AUTH	DESCRIPTION	NO.	DATE	AUTH	DESCRIPTION



DRAWN BY: JWI
CHECKED BY: SRT
FILE: 2600376_Maybury_Legend.dgn

DATE: 06/12/26
DESIGN UNIT: MSG
TSC:

CS:
JN: 2600376
751/26110.KMM

LEGEND
MAYBURY STATE PARK DRIVE IMPROVEMENTS

DRAWING SHEET
MAYBURY SECT 1
LEGEND 1 4

UTILITIES

COMBINED SEWER

- COMBINED SEWER
- COMBINED SEWER - OUT OF SERVICE
- COMBINED SEWER - TO BE TAKEN OUT OF SERVICE
- COMBINED SEWER - TO BE REMOVED

COMMUNICATION

- FIBER OPTIC
- FIBER OPTIC - OUT OF SERVICE
- FIBER OPTIC - OVERHEAD
- FIBER OPTIC MARKER
- CABLE
- CABLE - OUT OF SERVICE
- CABLE - OVERHEAD
- CABLE MARKER
- CABLE PEDESTAL
- TELEPHONE
- TELEPHONE - OUT OF SERVICE
- TELEPHONE - OVERHEAD
- TELEPHONE BOX
- TELEPHONE MANHOLE
- TELEPHONE PEDESTAL

FUEL / PETROLEUM

- GASOLINE FILLER PIPE
- GASOLINE PUMP
- GASOLINE UNDERGROUND TANK
- PETROLEUM PIPELINE
- PETROLEUM PIPELINE - OUT OF SERVICE
- PETROLEUM PIPELINE MARKER
- PETROLEUM WELL
- PROPANE TANK

NATURAL GAS

- GAS LINE
- GAS LINE - OUT OF SERVICE
- MARKER
- VALVE
- WELL

SANITARY SEWER

- MANHOLE WITH COVER (DIA VARIES)
- SEWER
- SEWER - OUT OF SERVICE
- SEWER - TO BE TAKEN OUT OF SERVICE
- SEWER - TO BE REMOVED

WATER

- FIRE HYDRANT
- GATE VALVE AND BOX
- GATE VALVE IN WELL
- IRRIGATION CONTROL VALVE
- IRRIGATION SPRINKLER HEAD
- SERVICE METER
- SERVICE SHUTOFF
- WATER WELL
- IRRIGATION
- WATER MAIN
- WATER MAIN - OUT OF SERVICE
- WATER MAIN - TO BE TAKEN OUT OF SERVICE
- WATER MAIN - TO BE REMOVED

STEAM

- STEAM
- STEAM - OUT OF SERVICE

GENERIC EXISTING UTILITIES

- GUY ANCHOR
- MARKER
- PEDESTAL
- POLE
- UTILITY BOX
- UTILITY

DRAINAGE

- CATCH BASIN COVER - EXISTING
- CATCH BASIN W/ COVER (DIA VARIES)
- DRAINAGE STRUCTURE NUMBER
- DRAIN CASTING
- DROP INLET
- END SECTION (SIZE VARIES)
- FLOW DIRECTION ARROW
- HEADWALL (SIZE VARIES)
- MANHOLE COVER - EXISTING
- MANHOLE W/ COVER (DIA VARIES)
- MANHOLE BASE W/ COVER (SIZE VARIES)
- MANHOLE TEE W/ COVER (SIZE VARIES)
- OUTLET HEADWALL (SIZE VARIES)
- SEWER CLEANOUT ACCESS - EXISTING
- STRUCTURE BOTTOM - EXISTING (DIA VARIES)

- CULVERT - EXISTING
- CULVERT (SIZE VARIES)
- DITCH CENTERLINE
- STORM SEWER - EXISTING
- STORM SEWER
- STORM SEWER - TO BE REMOVED
- UNDERDRAIN
- UNDERDRAIN - TO BE REMOVED
- WATER EDGE

MAINTAINING TRAFFIC

- TYPE III BARRICADE
- CHANNELIZING DEVICE - 42 INCH
- CHANNELIZING DEVICE - DRUM
- CHANNELIZING DEVICE - TUBULAR MARKER
- LIGHT - HIGH INTENSITY TYPE B
- LIGHT - STEADY BURN TYPE C
- LIGHTED ARROW PANEL - BAR
- LIGHTED ARROW PANEL
- PORTABLE CHANGEABLE MESSAGE SIGN
- PORTABLE WATER FILLED BARRIER
- TRAFFIC REGULATOR
- TEMPORARY BARRIER - 24 INCH
- TEMPORARY BARRIER - 28 INCH
- TEMPORARY BARRIER ENDING
- TEMPORARY SIGN
- TEMPORARY SPEED RADAR TRAILER
- TEMPORARY TRAFFIC SIGNAL
- WORK AREA

NOTE:

EXISTING ITEMS ARE REPRESENTED BY THIN LINE WEIGHTS.
PROPOSED ITEMS ARE REPRESENTED BY HEAVIER LINE WEIGHTS.

FINAL ROW PLAN REVISIONS				SUBMITTAL DATE:			
NO.	DATE	AUTH	DESCRIPTION	NO.	DATE	AUTH	DESCRIPTION



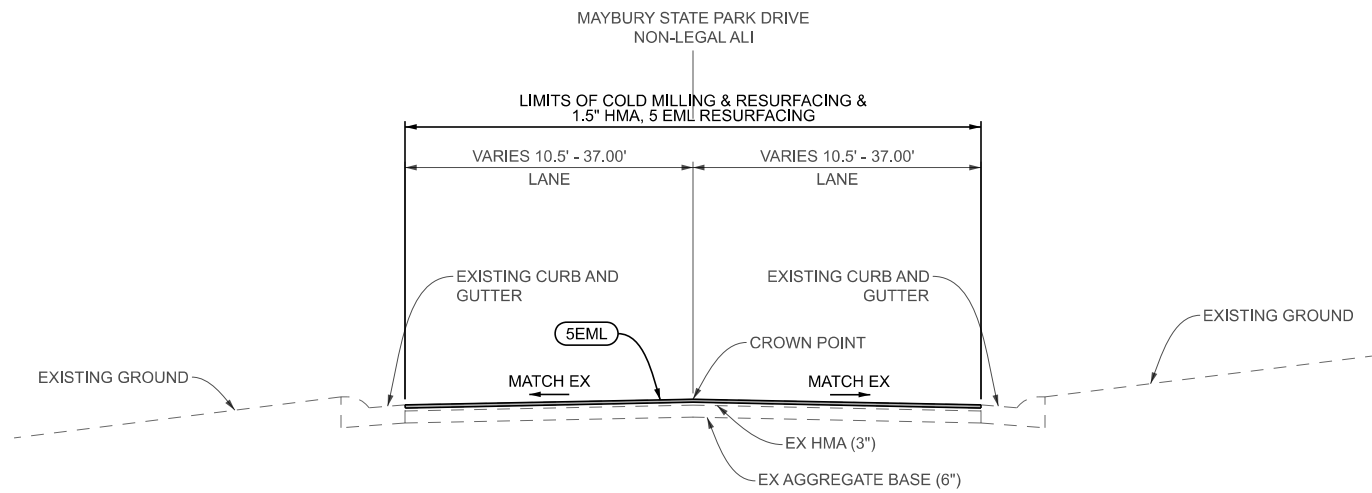
NO SCALE

DRAWN BY: JWI
CHECKED BY: SRT
FILE: 2600376_Maybury_Legend.dgn

DATE: 06/12/26
DESIGN UNIT: MSG
TSC:

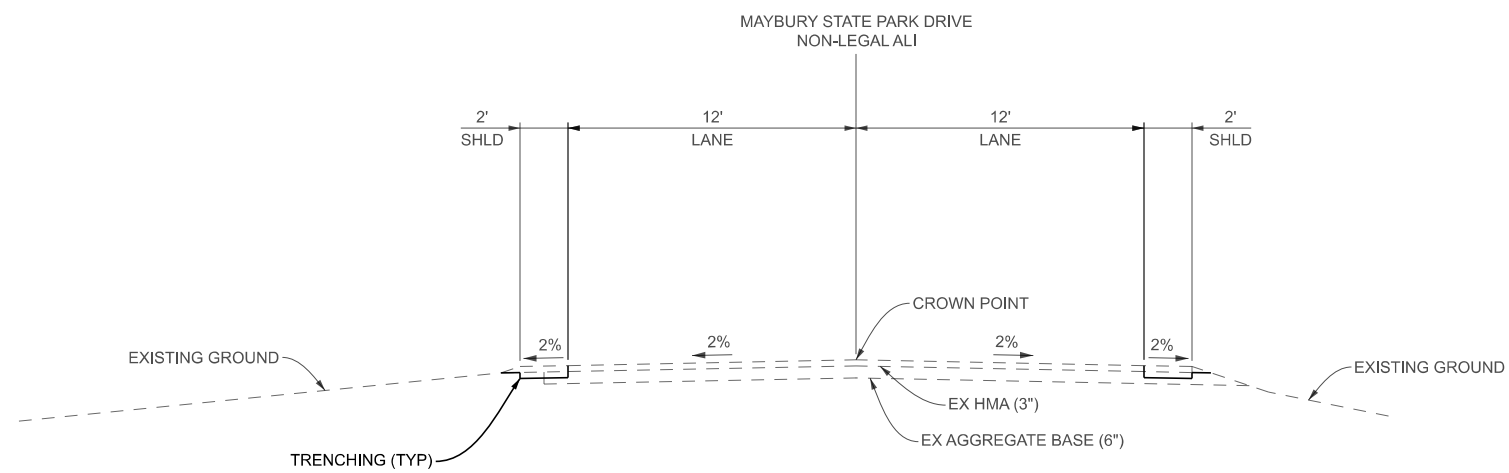
CS:
JN: 2600376
751/26110.KMM

LEGEND		DRAWING	SHEET
MAYBURY STATE PARK DRIVE IMPROVEMENTS		MAYBURY	SECT 1
		LEGEND	
		1	5



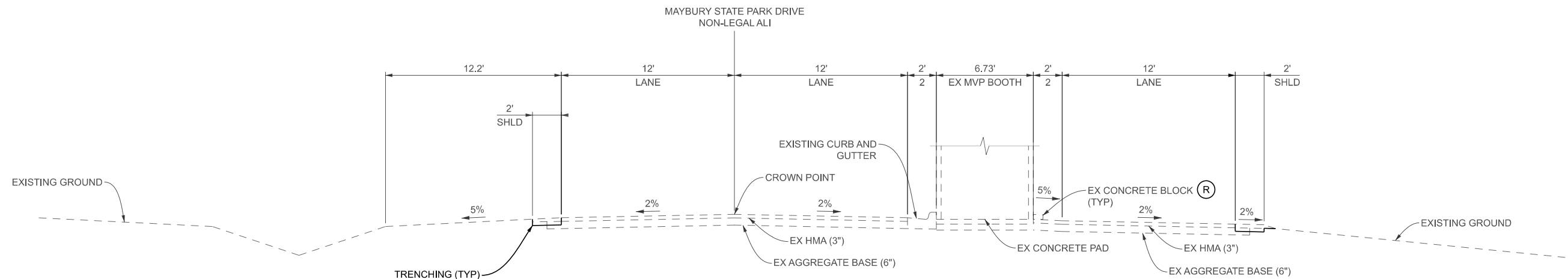
EXISTING/PROPOSED NORMAL SECTION

SECTION APPLIES TO:
STA. 0+24.00 (POB) TO STA. 0+62.51






EXISTING NORMAL SECTION

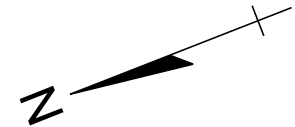
SECTION APPLIES TO:
STA. 0+62.51 TO STA. 9+24.20
STA. 11+09.70 TO STA. 16+28.00 (POE)



EXISTING NORMAL SECTION

SECTION APPLIES TO:
STA. 9+24.20 TO STA. 11+09.70

FINAL ROW PLAN REVISIONS				SUBMITTAL DATE:				  	VERT. (FT) 8 0 HORZ. (FT) 8	DRAWN BY: JWI CHECKED BY: SRT FILE: Maybury_Typicals.dgn	DATE: 06/12/26 DESIGN UNIT: MSG TSC:	CS: JN: 2600376 751/26110.KMM	DRAWING SHEET	
NO.	DATE	AUTH	DESCRIPTION	NO.	DATE	AUTH	DESCRIPTION						TYPICAL CROSS SECTIONS	
												MAYBURY STATE PARK DRIVE IMPROVEMENTS	MAYBURY TYP 1	SECT 1 6



8 MILE RD

POST, MAILBOX

HAZARDOUS OR FLAMMABLE MATERIAL

CAUTION - UNDERGROUND UTILITY

ALL_MAYBURY_EXISTING
 $\Delta = 82^{\circ}14'03''$ (RT)
 $D = 54^{\circ}34'22''$
 $T = 91.64'$
 $L = 150.69$
 $R = 104.99'$
 $E = 34.37'$
 $PC = 0+97.66$
 $PI = 1+89.30$
 $PT = 2+48.34$
 $EX e =$
 $PR e =$
 $\Delta\% =$

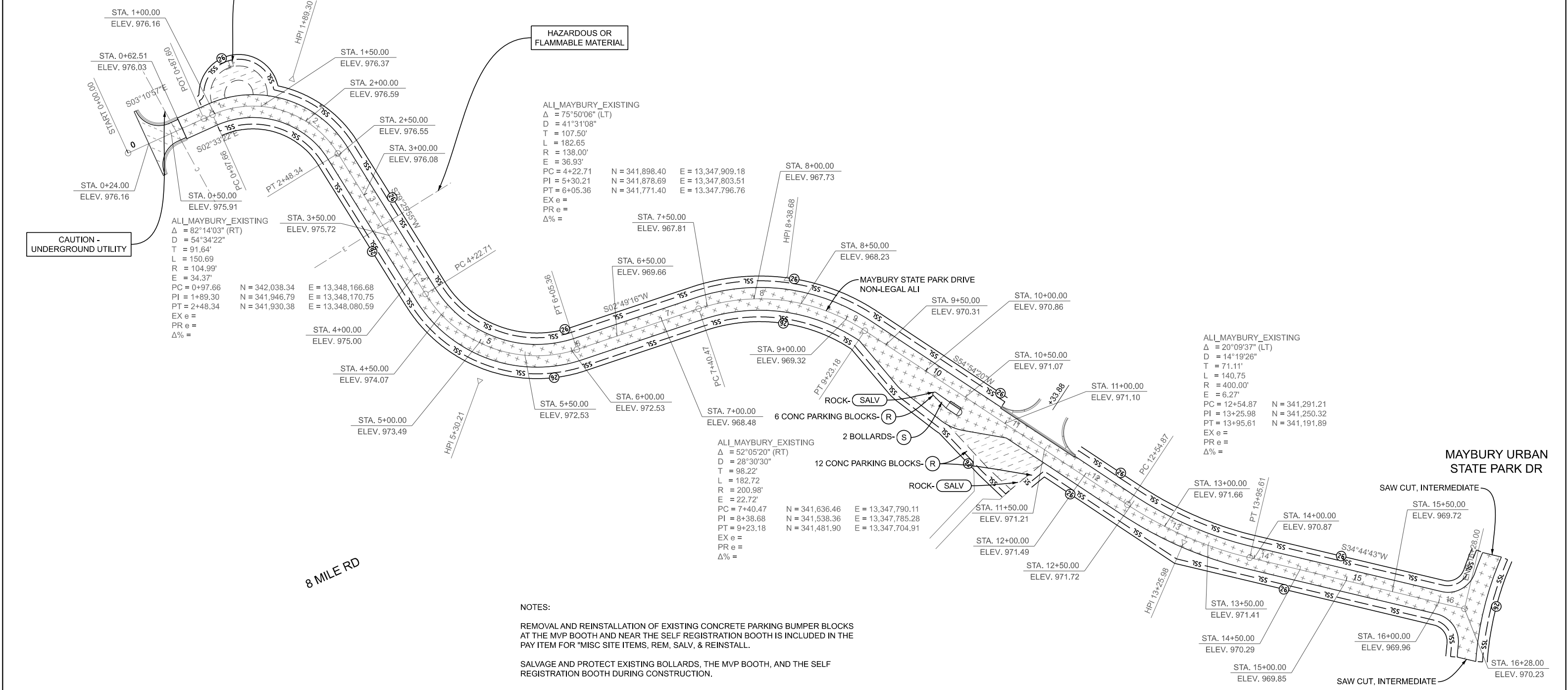
ALL_MAYBURY_EXISTING
 $\Delta = 75^{\circ}50'06''$ (LT)
 $D = 41^{\circ}31'08''$
 $T = 107.50'$
 $L = 182.65$
 $R = 138.00'$
 $E = 36.93'$
 $PC = 4+22.71$
 $PI = 5+30.21$
 $PT = 6+05.36$
 $EX e =$
 $PR e =$
 $\Delta\% =$

ALL_MAYBURY_EXISTING
 $\Delta = 20^{\circ}09'37''$ (LT)
 $D = 14^{\circ}19'26''$
 $T = 71.11'$
 $L = 140.75$
 $R = 400.00'$
 $E = 6.27'$
 $PC = 12+54.87$
 $PI = 13+25.98$
 $PT = 13+95.61$
 $EX e =$
 $PR e =$
 $\Delta\% =$

ALL_MAYBURY_EXISTING
 $\Delta = 52^{\circ}05'20''$ (RT)
 $D = 28^{\circ}30'30''$
 $T = 98.22'$
 $L = 182.72$
 $R = 200.98'$
 $E = 22.72'$
 $PC = 7+40.47$
 $PI = 8+38.68$
 $PT = 9+23.18$
 $EX e =$
 $PR e =$
 $\Delta\% =$

NOTES:

- REMOVAL AND REINSTALLATION OF EXISTING CONCRETE PARKING BUMPER BLOCKS AT THE MVP BOOTH AND NEAR THE SELF REGISTRATION BOOTH IS INCLUDED IN THE PAY ITEM FOR "MISC SITE ITEMS, REM, SALV, & REINSTALL."
- SALVAGE AND PROTECT EXISTING BOLLARDS, THE MVP BOOTH, AND THE SELF REGISTRATION BOOTH DURING CONSTRUCTION.



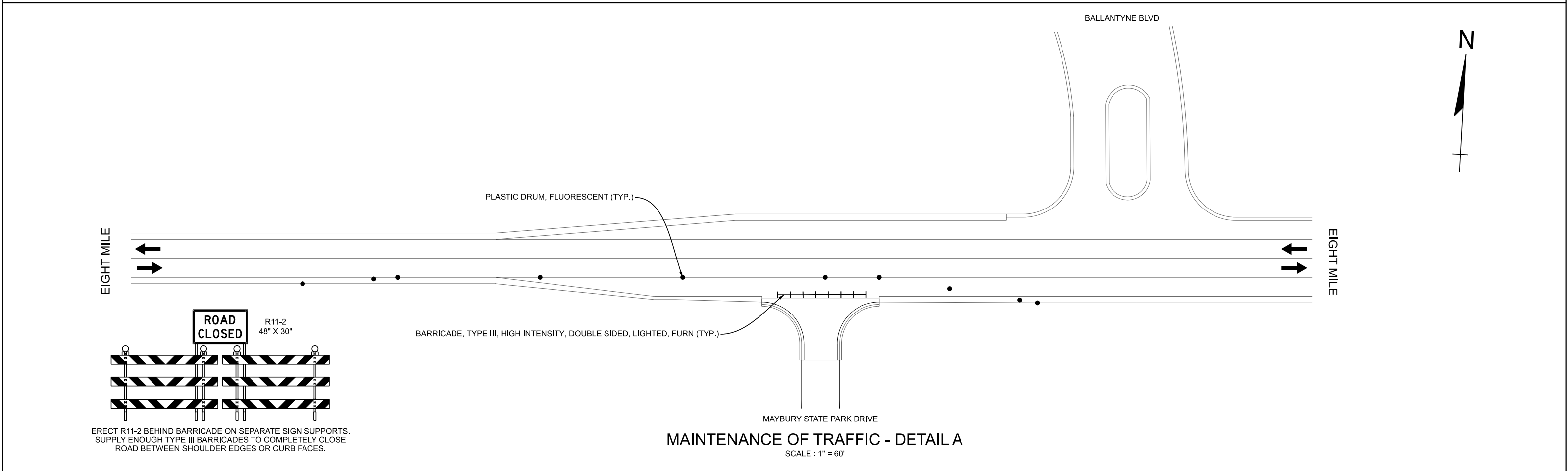
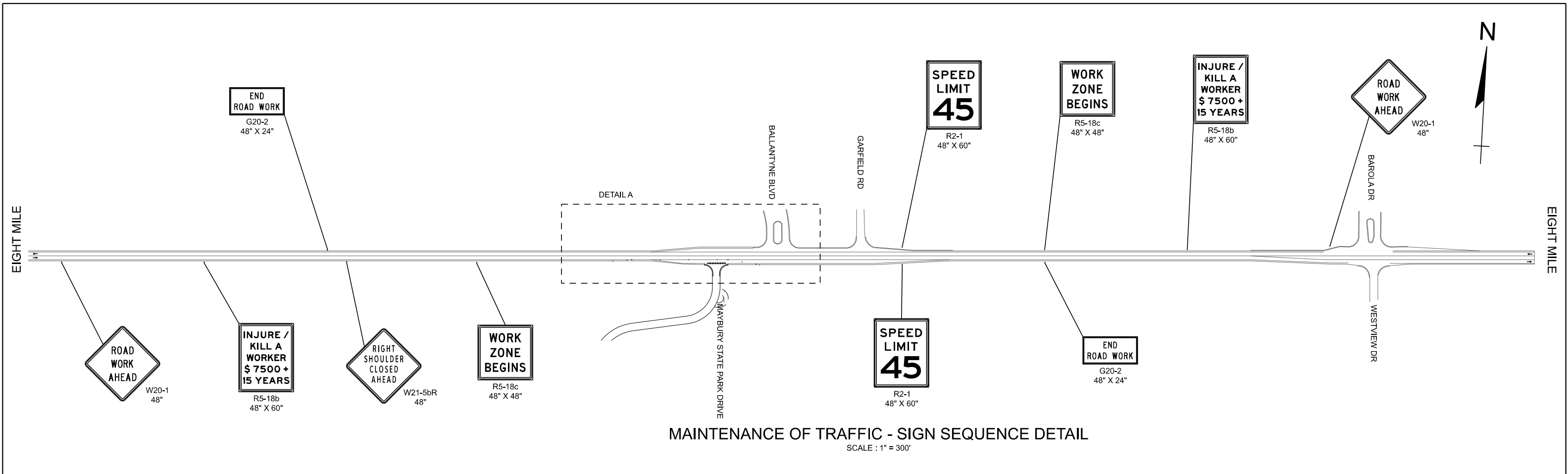
MAYBURY URBAN STATE PARK DR

SAW CUT, INTERMEDIATE

MAYBURY URBAN STATE PARK DR

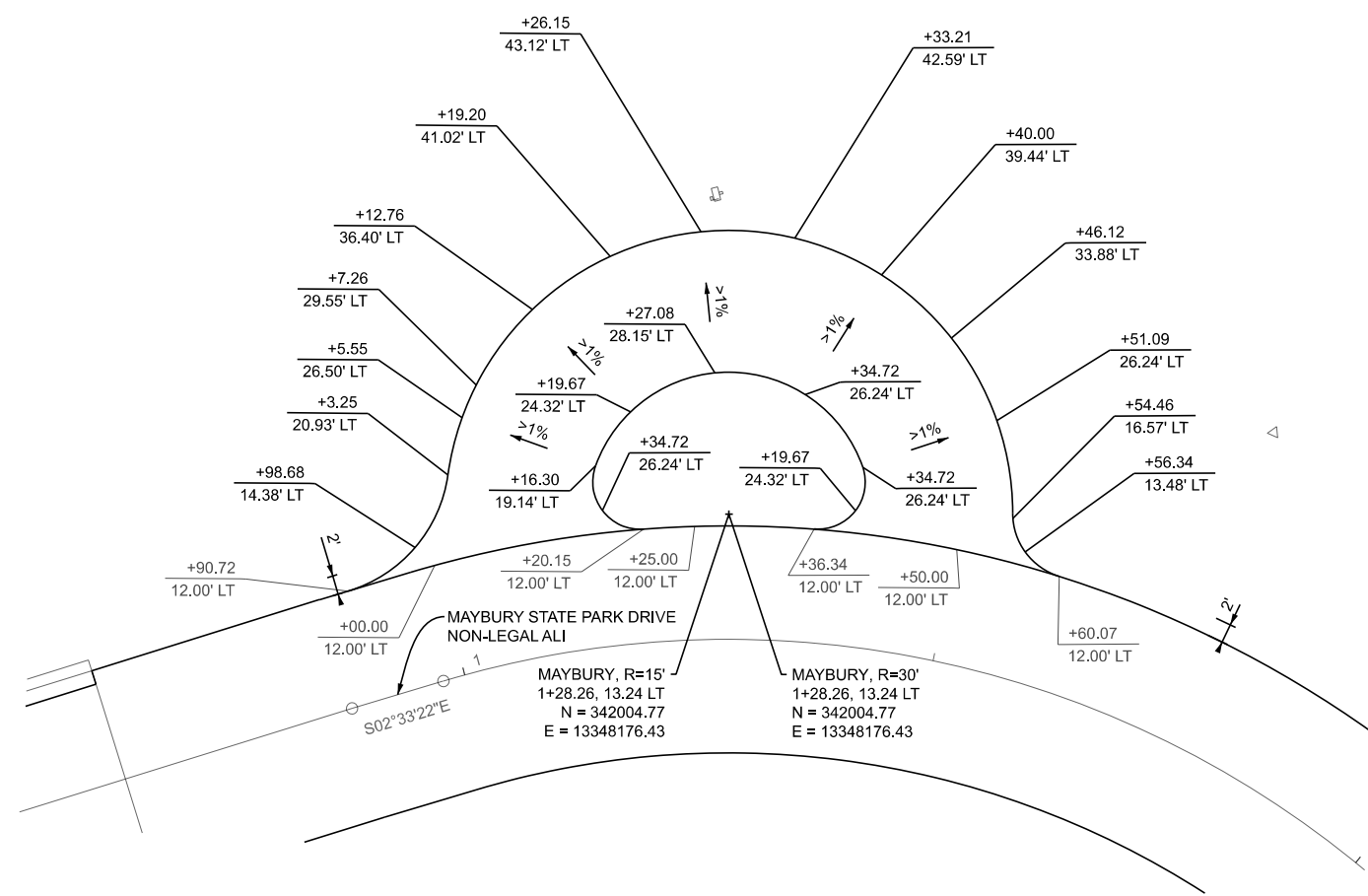
FINAL ROW PLAN REVISIONS				SUBMITTAL DATE:				DRAWN BY: JWI		DATE: 06/12/26		CS:		REMOVAL		DRAWING SHEET	
NO.	DATE	AUTH	DESCRIPTION	NO.	DATE	AUTH	DESCRIPTION	CHECKED BY: SRT	DESIGN UNIT: MSG	JN: 2600376	751/26110.KMM	MAYBURY STA 0+00 TO STA 0+00		MAYBURY	SECT 1		
								FILE: Maybury State Park Rem 001.dgn	TSC:			1	9				





ERECT R11-2 BEHIND BARRICADE ON SEPARATE SIGN SUPPORTS.
SUPPLY ENOUGH TYPE III BARRICADES TO COMPLETELY CLOSE
ROAD BETWEEN SHOULDER EDGES OR CURB FACES.

FINAL ROW PLAN REVISIONS				SUBMITTAL DATE:							NO SCALE	DRAWN BY: JWI	DATE: 06/12/26	CS:	MAINTENANCE OF TRAFFIC			
NO.	DATE	AUTH	DESCRIPTION	NO.	DATE	AUTH	DESCRIPTION								MAYBURY STATE PARK DRIVE IMPROVEMENTS			
												FILE: Maybury State Park MOT001.dgn	DESIGN UNIT: MSG	JN: 2600376	DRAWING SHEET			
												TSC:	751/26110.KMM	MAYBURY SECT 1				
															MOT			
															1			
															11			



DETAIL GRADES - U-TURN LOOP LOCATION
SCALE: 1" = 20'

* GRADE TO PROVIDE A MINIMUM SLOPE OF 1% TO PROMOTE POSITIVE DRAINAGE.

FINAL ROW PLAN REVISIONS				SUBMITTAL DATE:			
NO.	DATE	AUTH	DESCRIPTION	NO.	DATE	AUTH	DESCRIPTION



DRAWN BY: JWI
CHECKED BY: SRT
FILE: Maybury State Park DetGrd 001.dgn

DATE: 06/12/26
DESIGN UNIT: MSG
TSC:

CS:
JN: 2600376
751/26110.KMM

DETAIL GRADES
U-TURN LOOP LOCATION

DRAWING SHEET
MAYBURY DETGRD SECT 1
1 12

